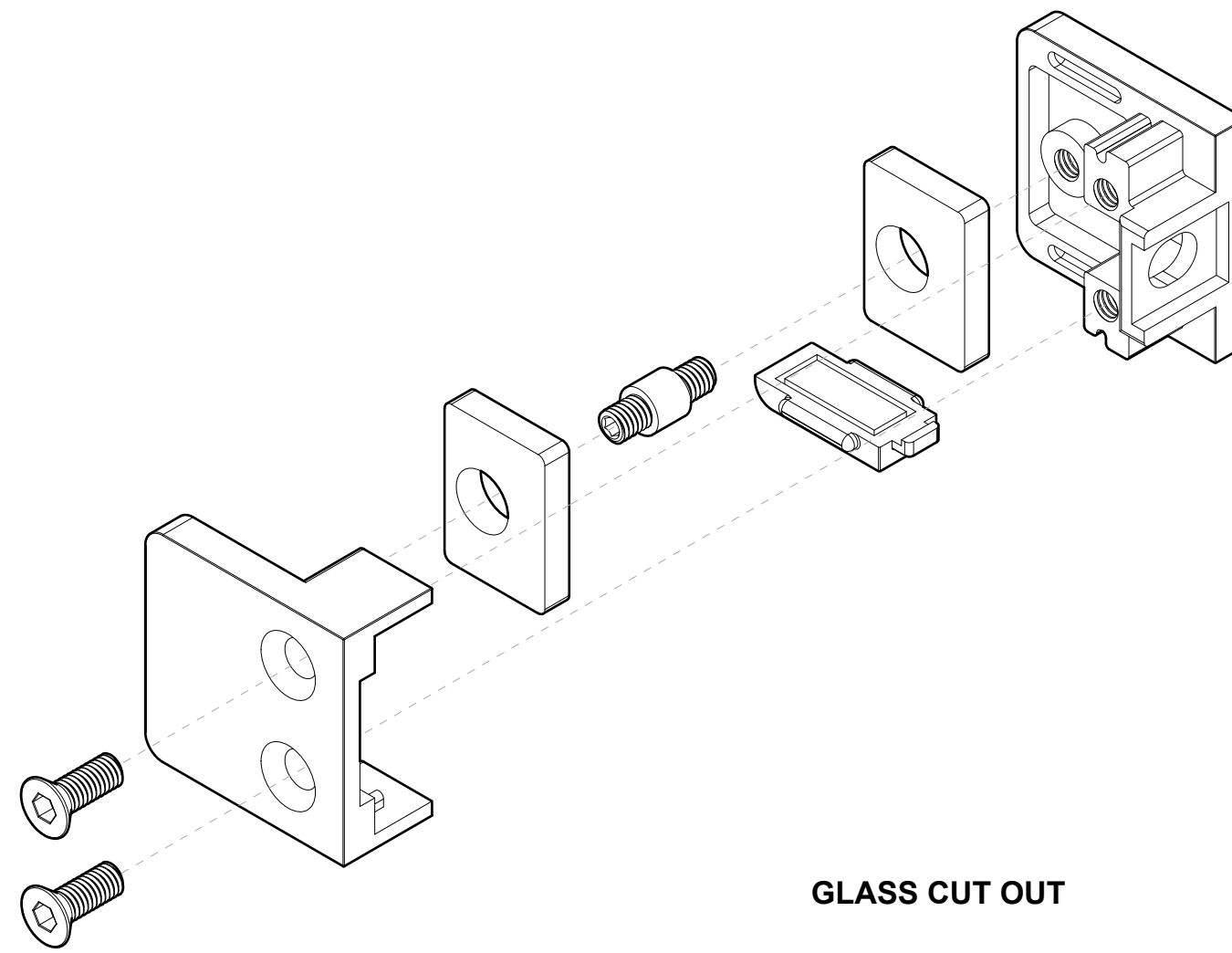
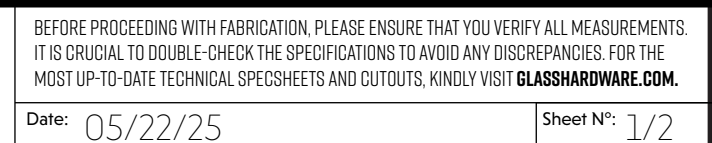
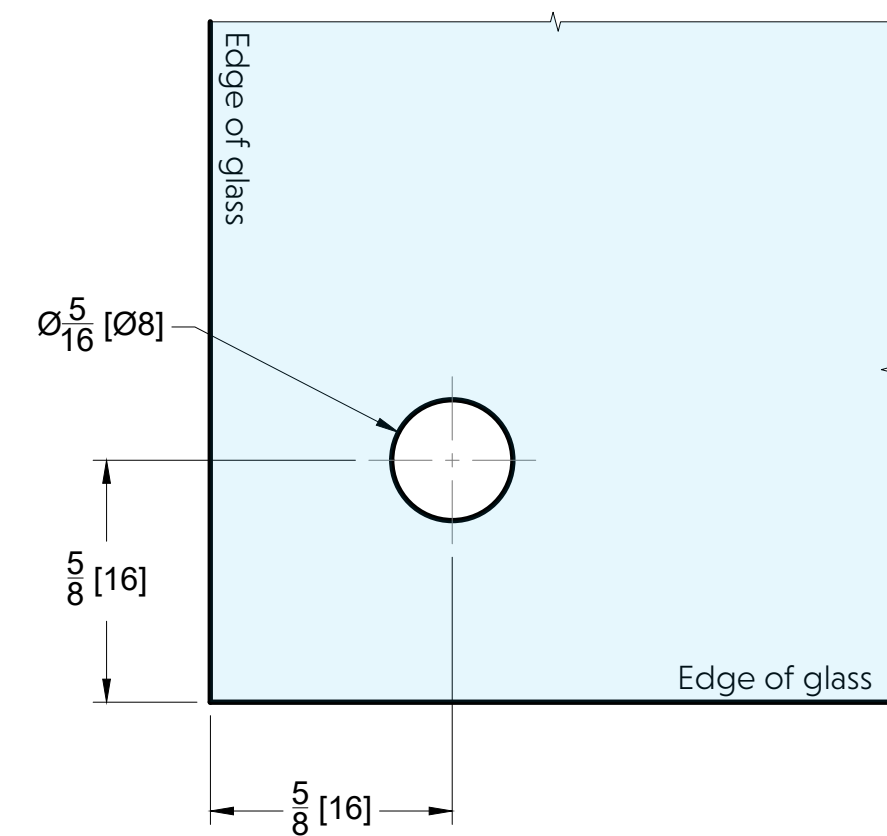


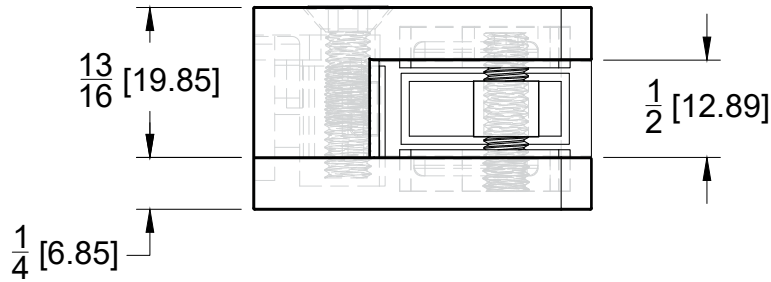
This diagram shows the front panel assembly in an exploded view. The front panel is a rectangular component with rounded corners. It is shown positioned relative to the main unit, with a handle and a latch mechanism visible on the right side. The handle is a curved, elongated piece, and the latch is a smaller, rectangular component. The front panel is shown with a small gap between it and the main unit, indicating it is to be attached to the front of the device.



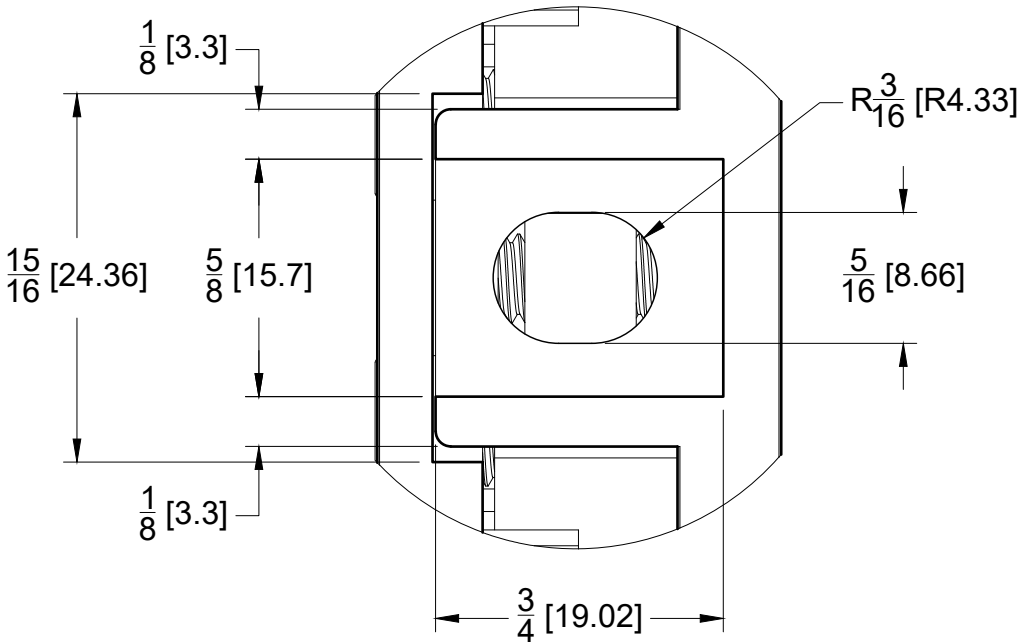
GLASS CUT OUT



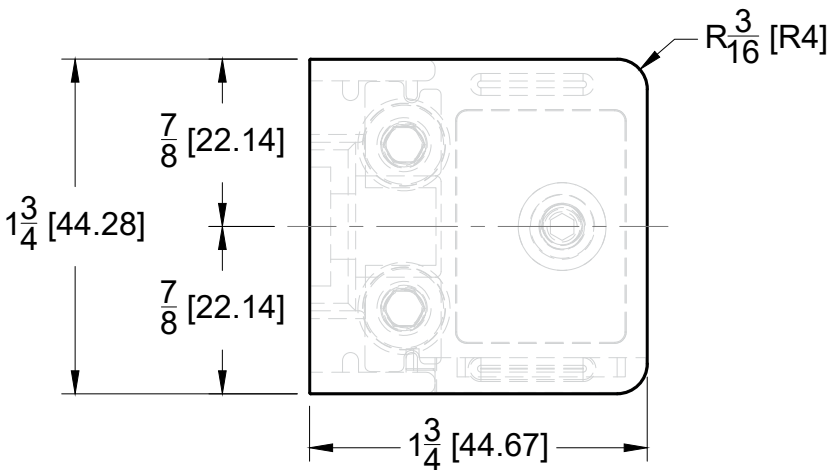
TOP VIEW



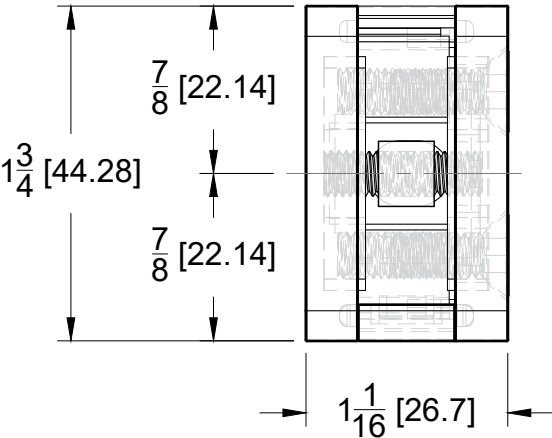
DETAIL A



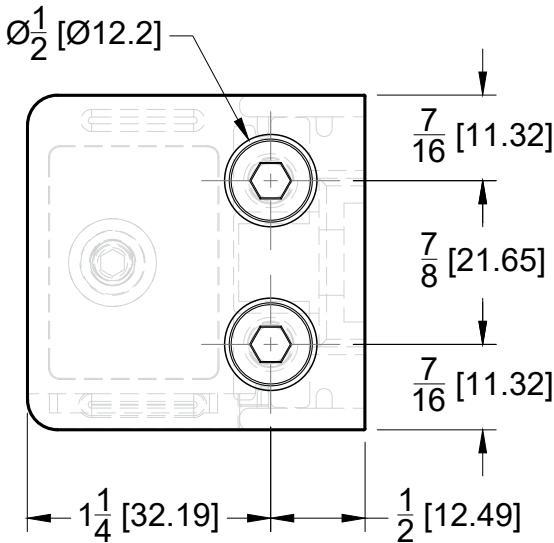
FRONT VIEW



RIGHT SIDE VIEW



BACK VIEW



LEFT SIDE VIEW

