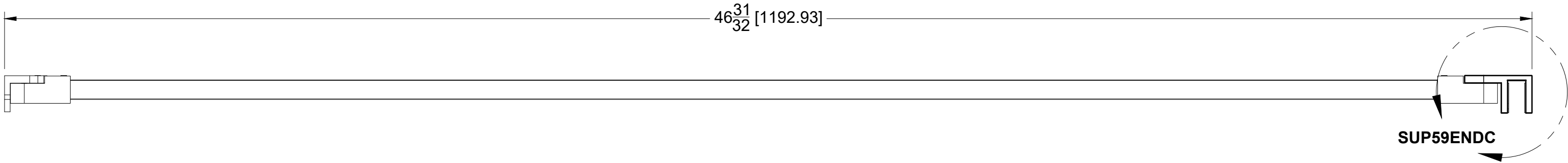
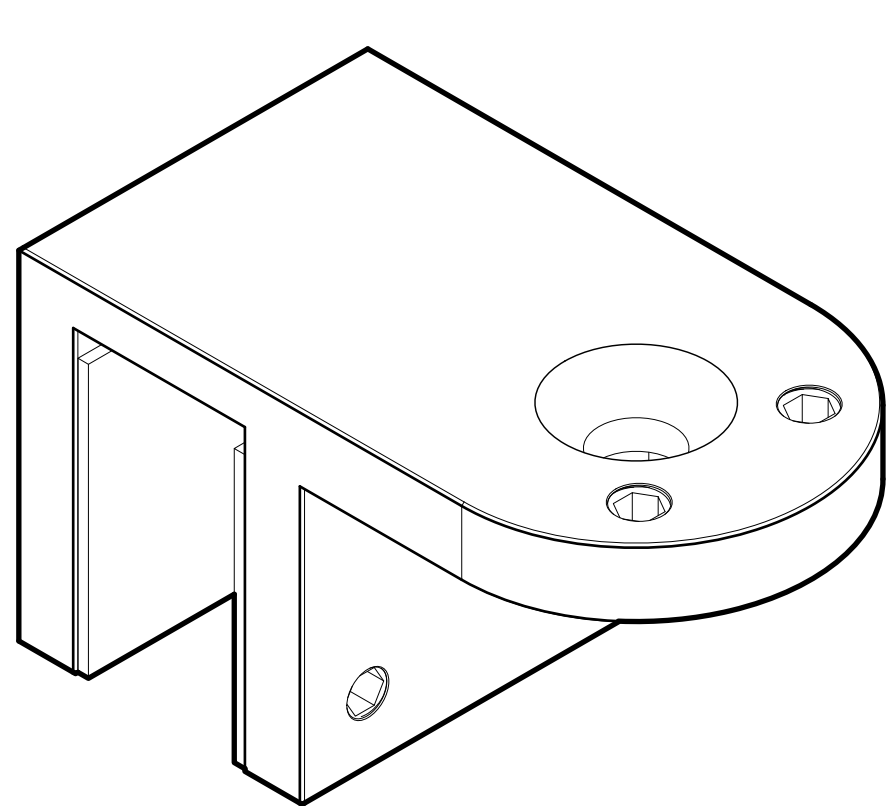


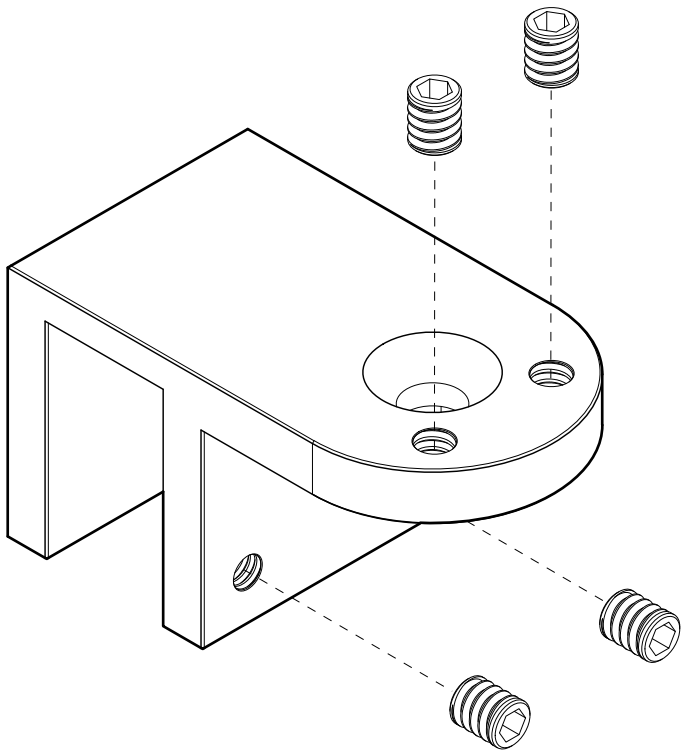
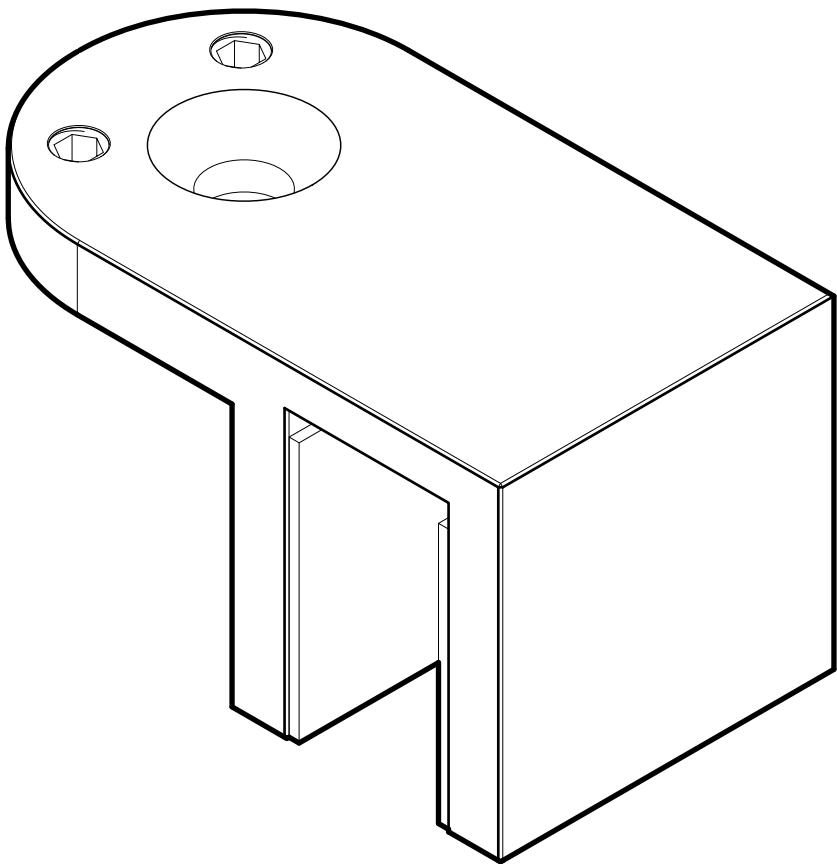
*Support bar not included



FRONT



BACK



10101 NW 79th Ave
Hialeah Gardens, FL 33016
Phone: (877) 658-9008

Product: **Glass Mount Adjustable Bracket for Support Bar**

Code: SUP59ENDC

Material: 316L Stainless Steel

Specifications:

Glass thickness: 3/8" (10 mm) to 1/2" (12.7 mm).
Cutout required - Tempered glass

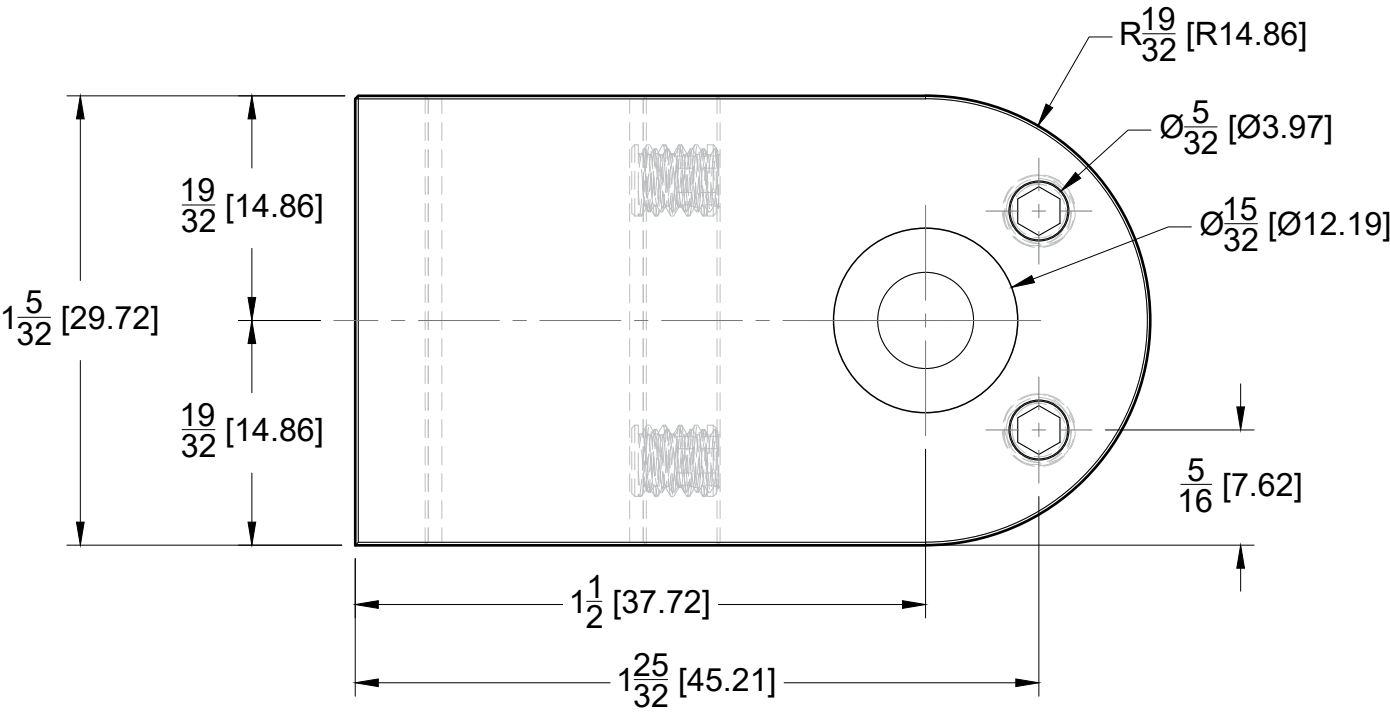
Includes: One Glass Mount Adjustable Bracket

BEFORE PROCEEDING WITH FABRICATION, PLEASE ENSURE THAT YOU VERIFY ALL MEASUREMENTS. IT IS CRUCIAL TO DOUBLE-CHECK THE SPECIFICATIONS TO AVOID ANY DISCREPANCIES. FOR THE MOST UP-TO-DATE TECHNICAL SPECSHEETS AND CUTOUTS, KINDLY VISIT GLASSHARDWARE.COM.

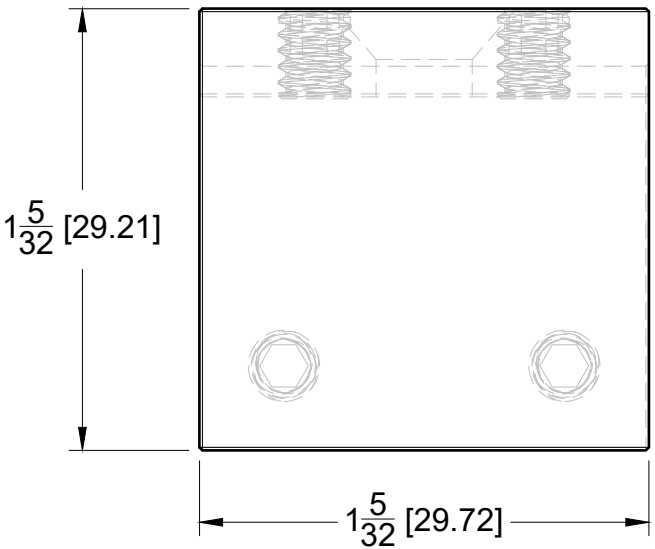
Date: 05/29/25

Sheet N°: 1/2

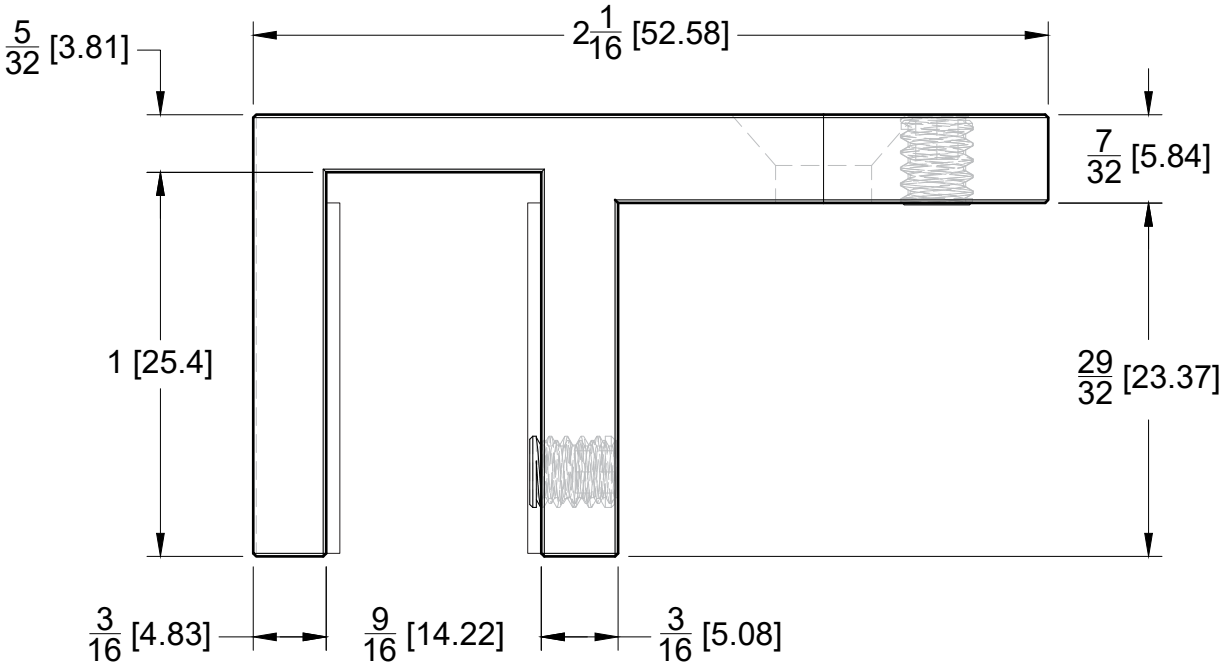
TOP VIEW



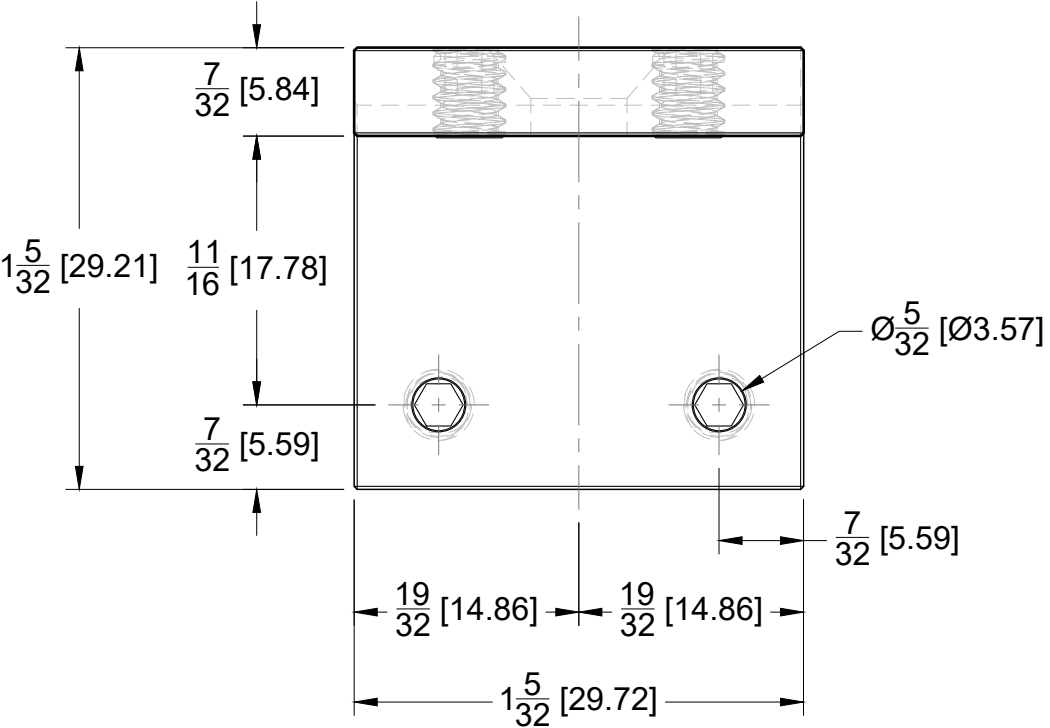
LEFT SIDE VIEW



FRONT VIEW



RIGHT SIDE VIEW



Specifications:

Glass thickness: 3/8" (10 mm) to 1/2" (12.7 mm).
Cutout required - Tempered glass

Includes: One Glass Mount Adjustable Bracket

BEFORE PROCEEDING WITH FABRICATION, PLEASE ENSURE THAT YOU VERIFY ALL MEASUREMENTS. IT IS CRUCIAL TO DOUBLE-CHECK THE SPECIFICATIONS TO AVOID ANY DISCREPANCIES. FOR THE MOST UP-TO-DATE TECHNICAL SPECSHEETS AND CUTOUTS, KINDLY VISIT GLASSHARDWARE.COM.