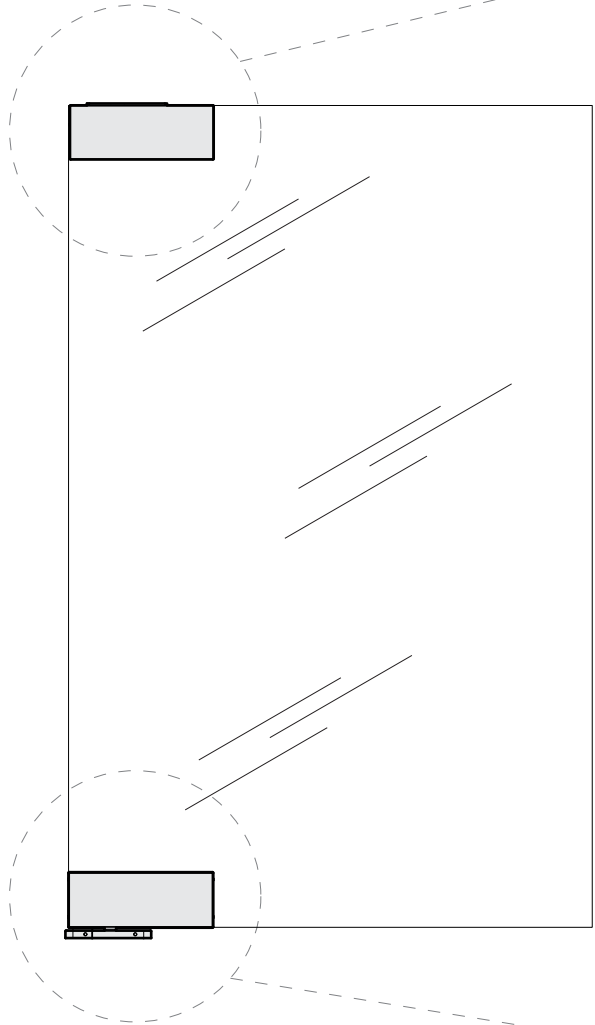
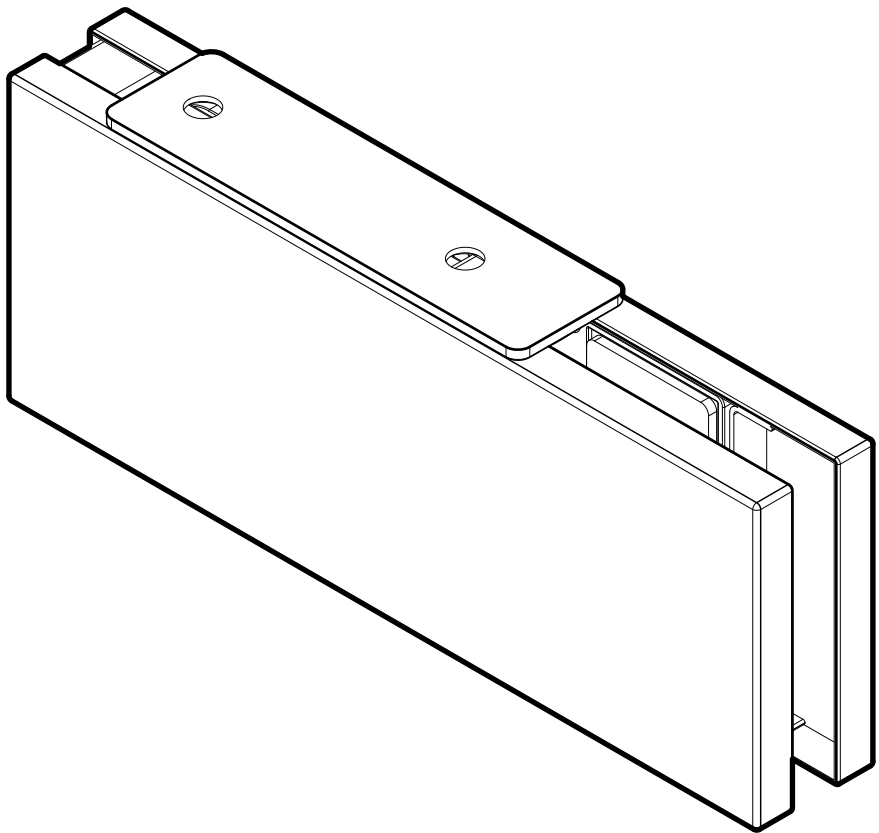


PFH102

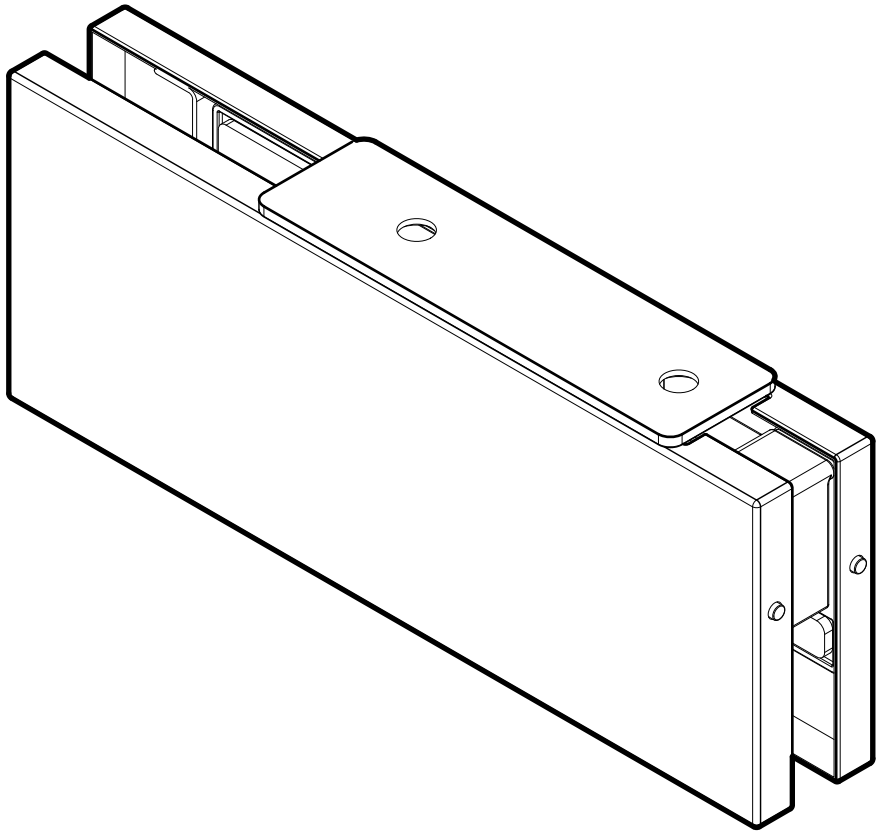


OCFH100-HO

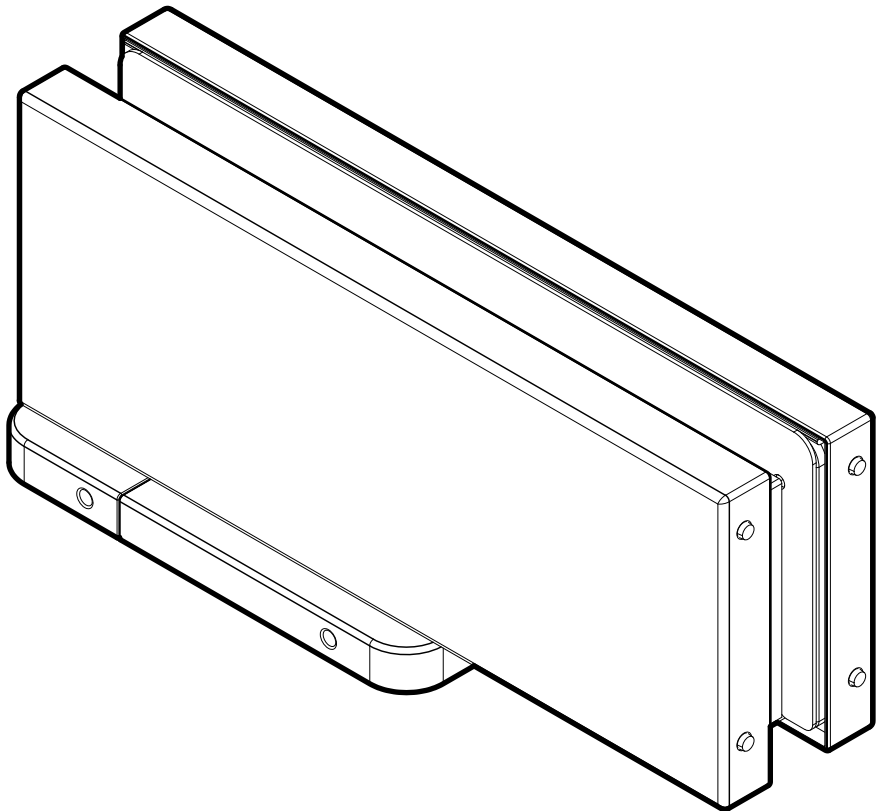
FRONT



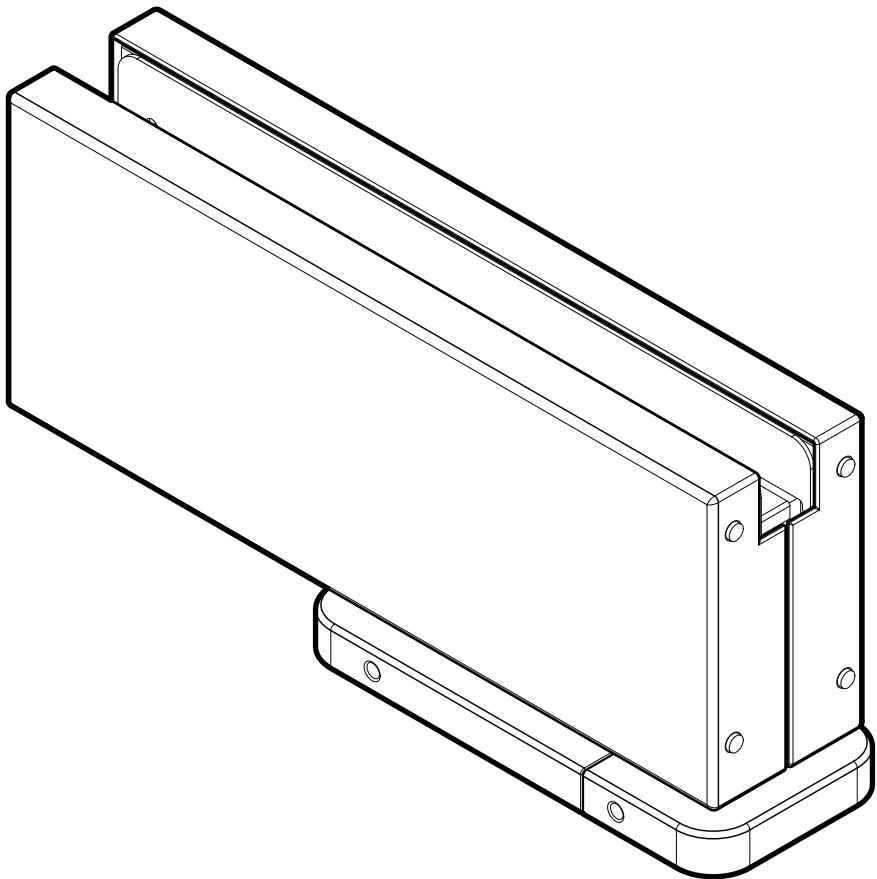
BACK

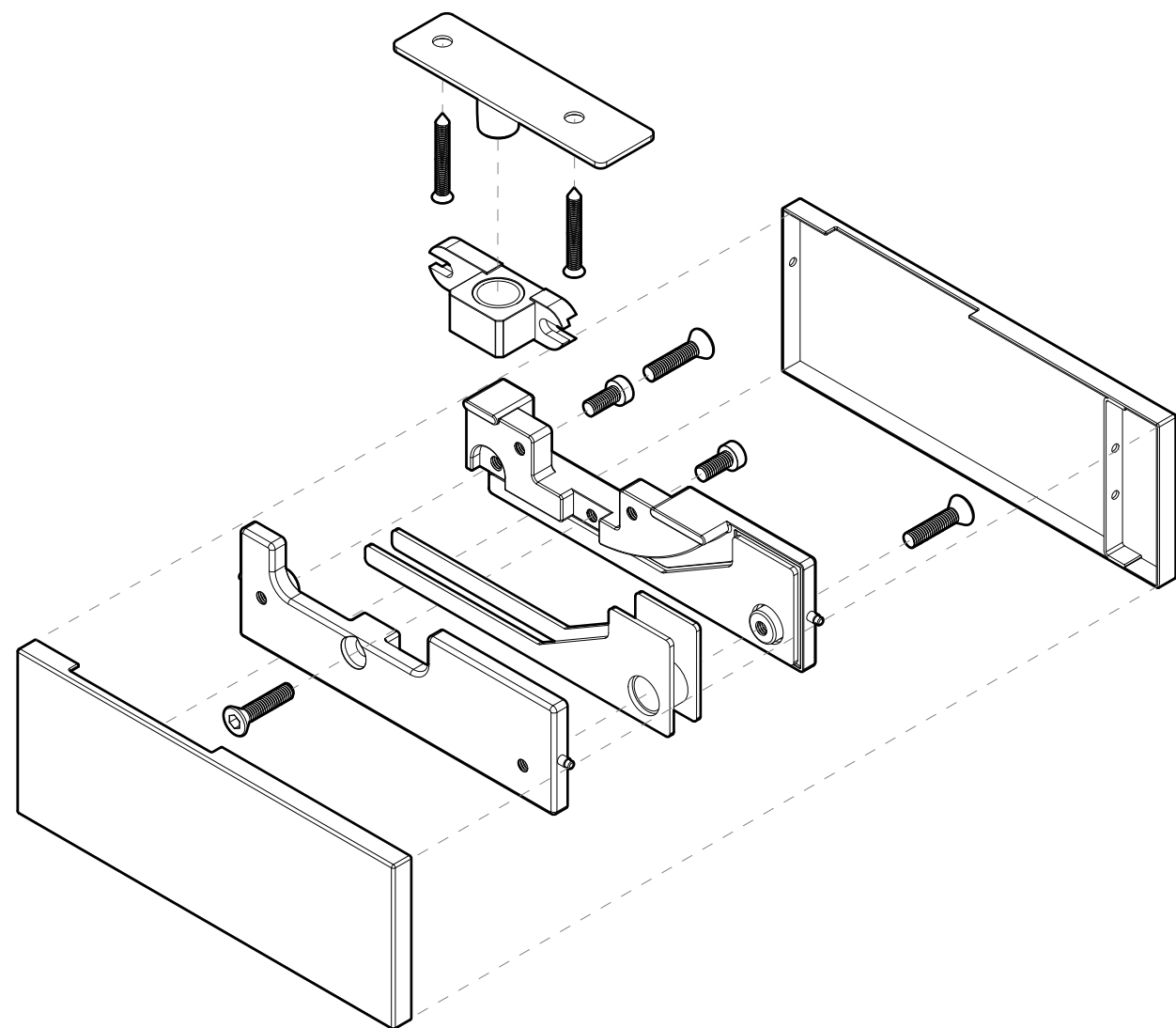


FRONT

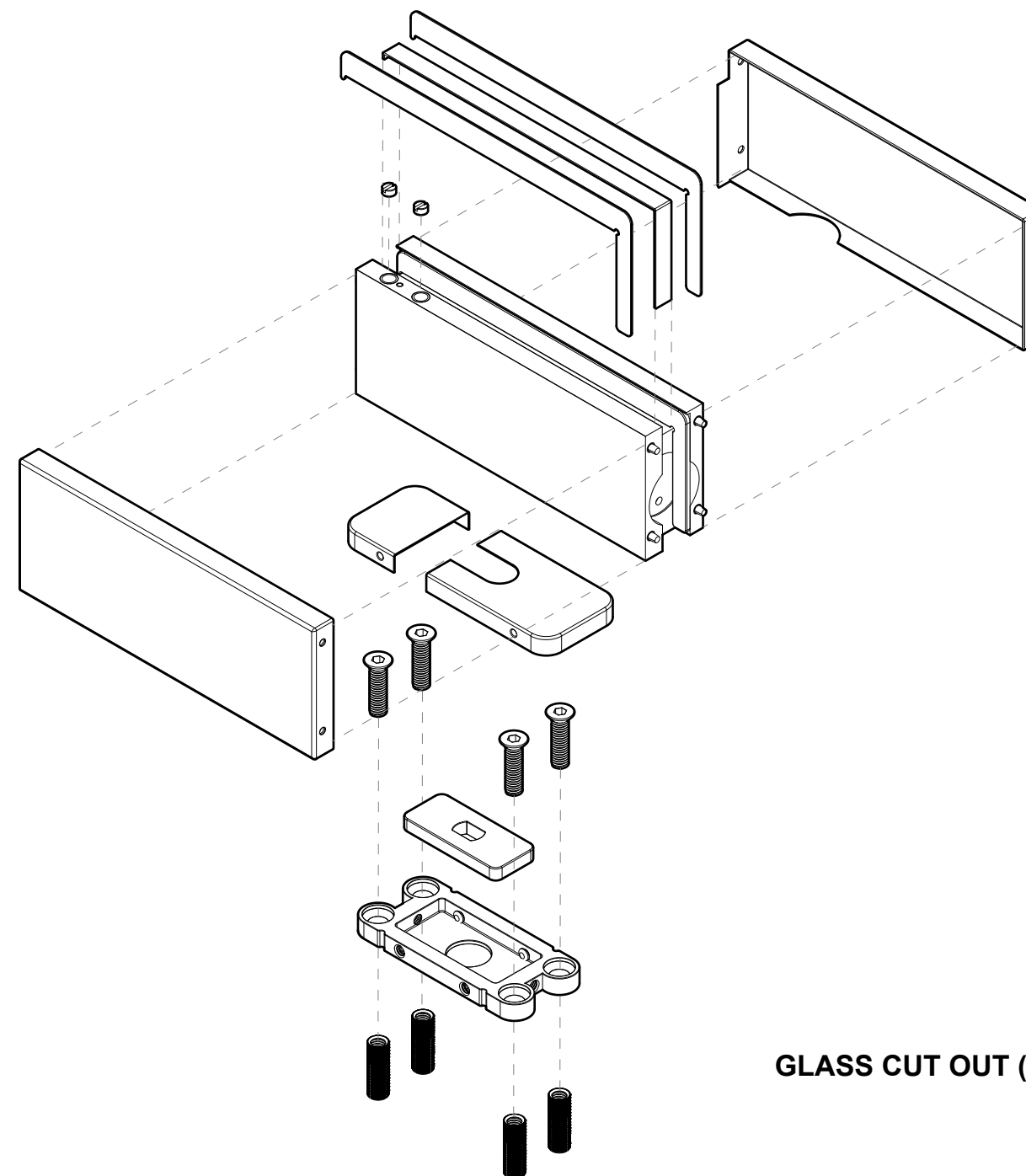
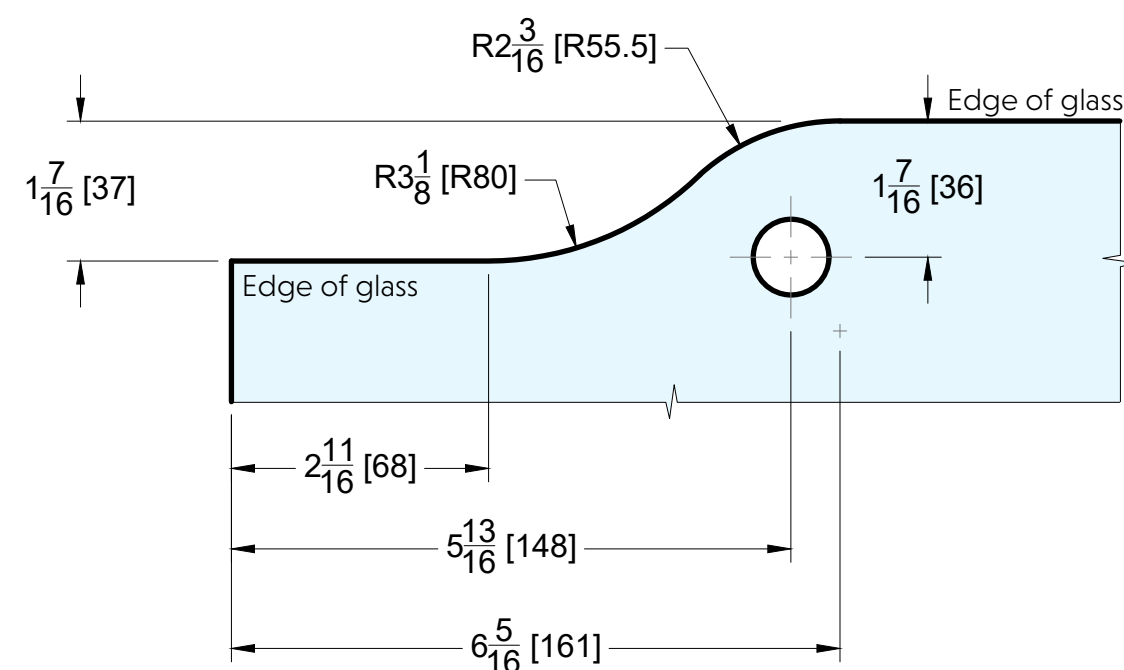


BACK

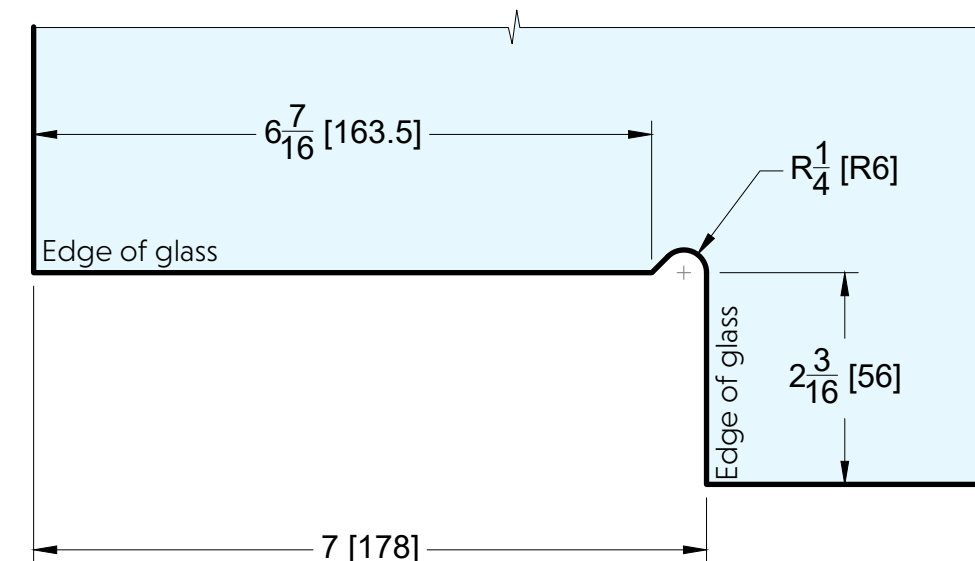




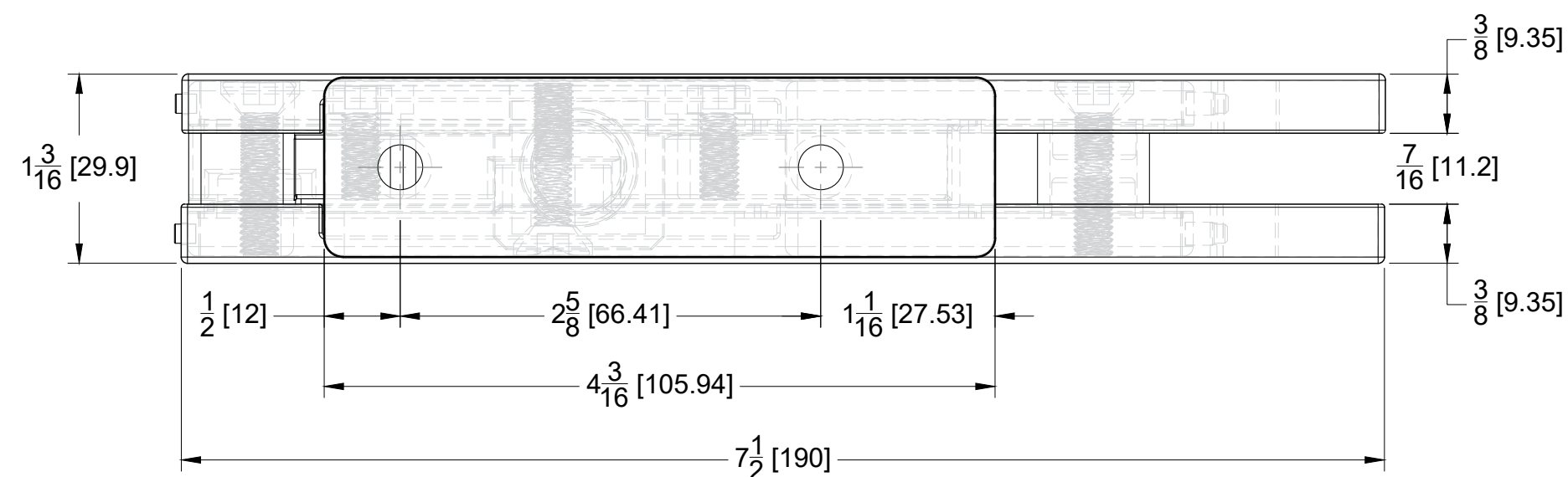
GLASS CUT OUT (PFH102)



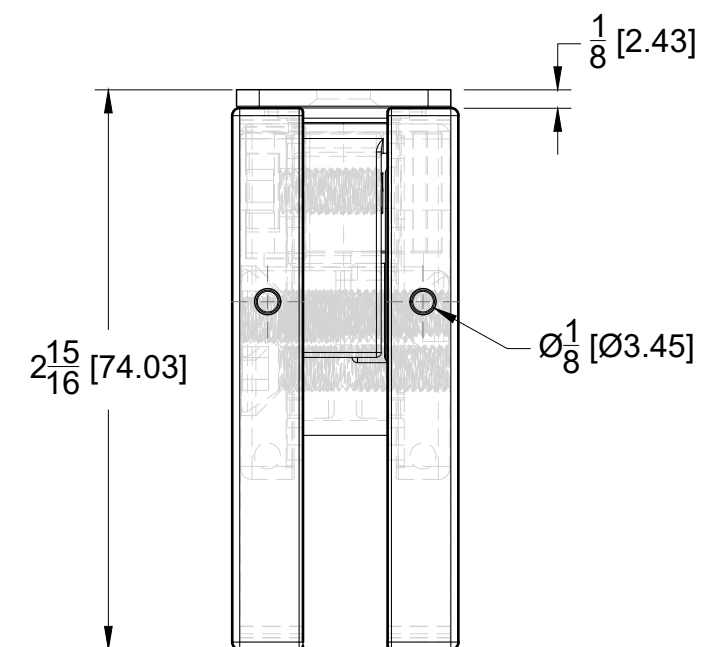
GLASS CUT OUT (OCFH100-HO)



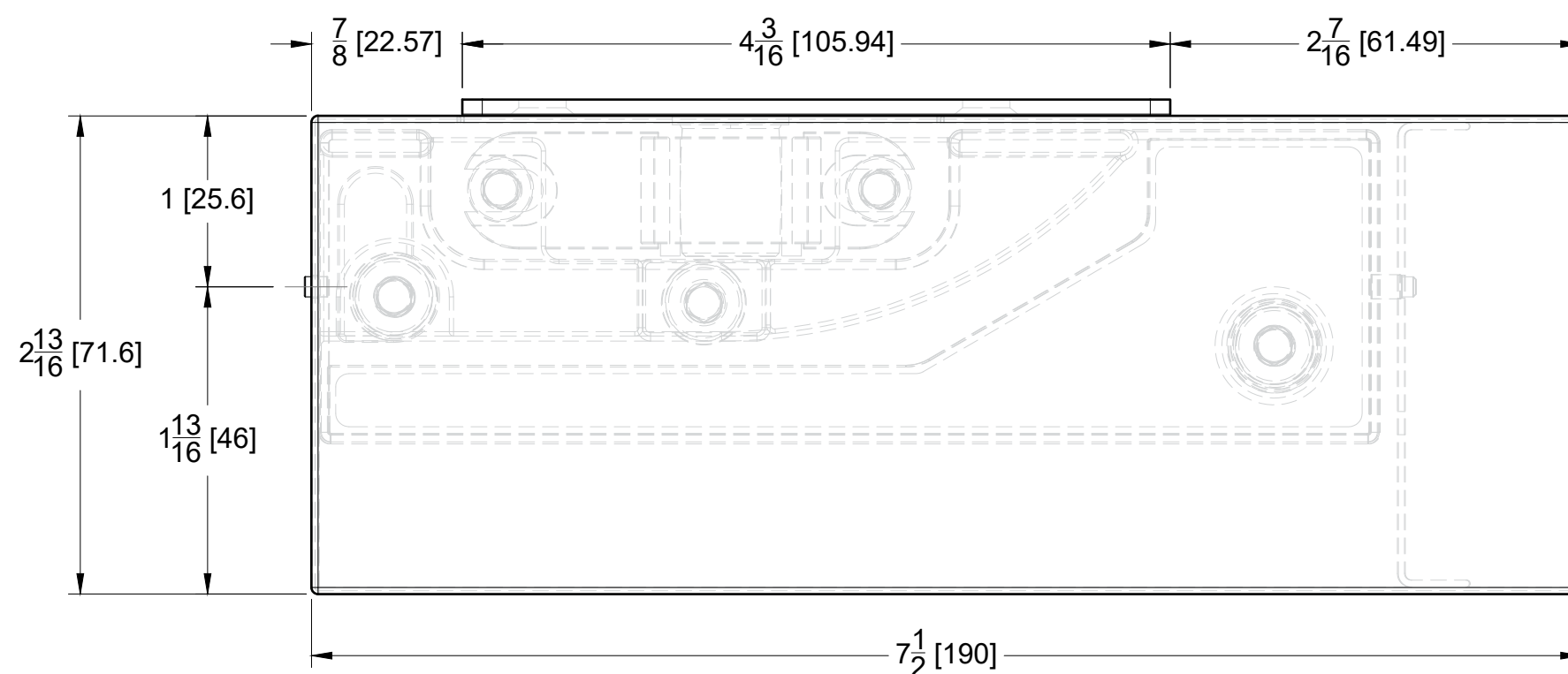
TOP VIEW



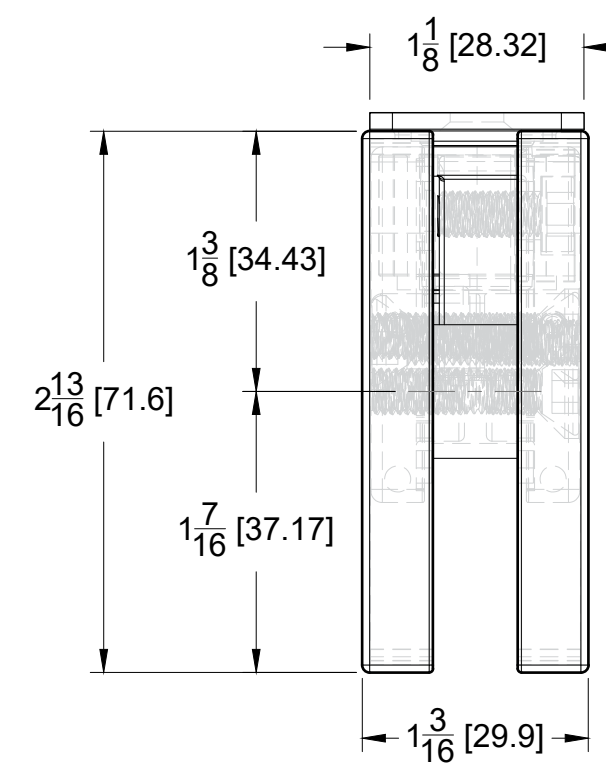
LEFT SIDE VIEW



FRONT VIEW



RIGHT SIDE VIEW



10101 NW 79th Ave
Hialeah Gardens, FL 33016
Phone: (877) 658-9008

Product:

Hydraulic Patch Fitting Kit (Hold Open)

Code:

OCFH-KIT

Material:

Material: 304 Stainless Steel

Specifications:

Glass thickness: 3/8" (10 mm) to 1/2" (12 mm).
Cutout required

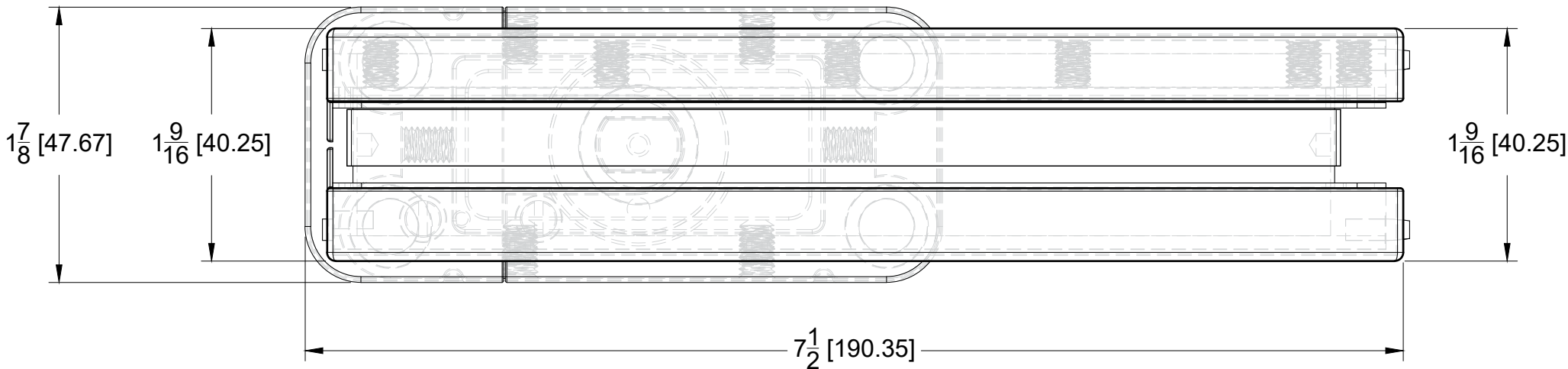
Includes: Gaskets, Allen key and mounting screws

BEFORE PROCEEDING WITH FABRICATION, PLEASE ENSURE THAT YOU VERIFY ALL MEASUREMENTS. IT IS CRUCIAL TO DOUBLE-CHECK THE SPECIFICATIONS TO AVOID ANY DISCREPANCIES. FOR THE MOST UP-TO-DATE TECHNICAL SPECSHEETS AND CUTOUTS, KINDLY VISIT GLASSHARDWARE.COM.

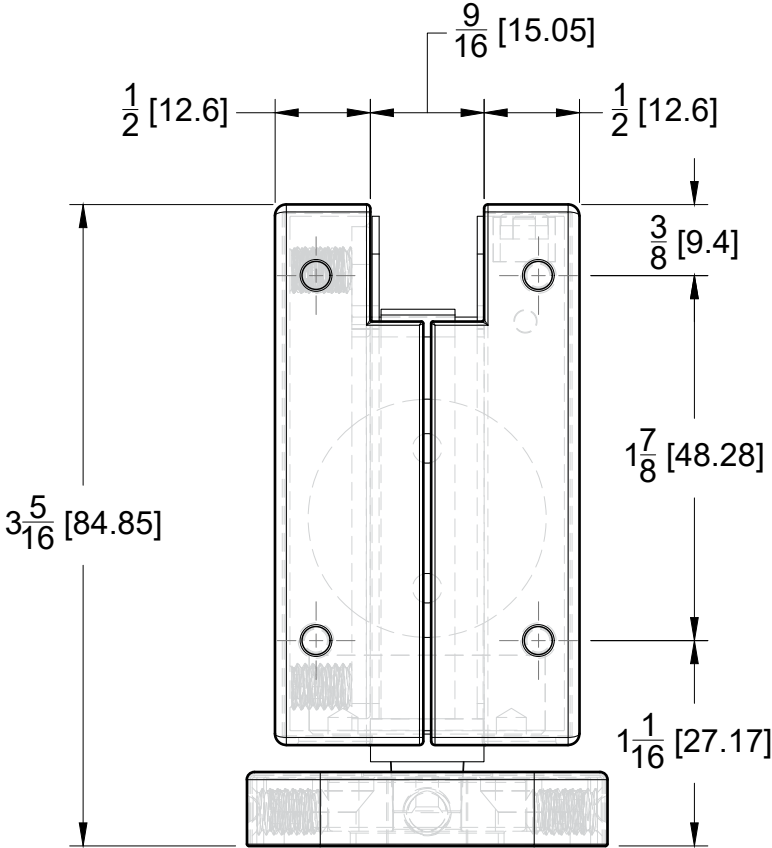
Date: 07/08/25

Sheet N°: 3/4

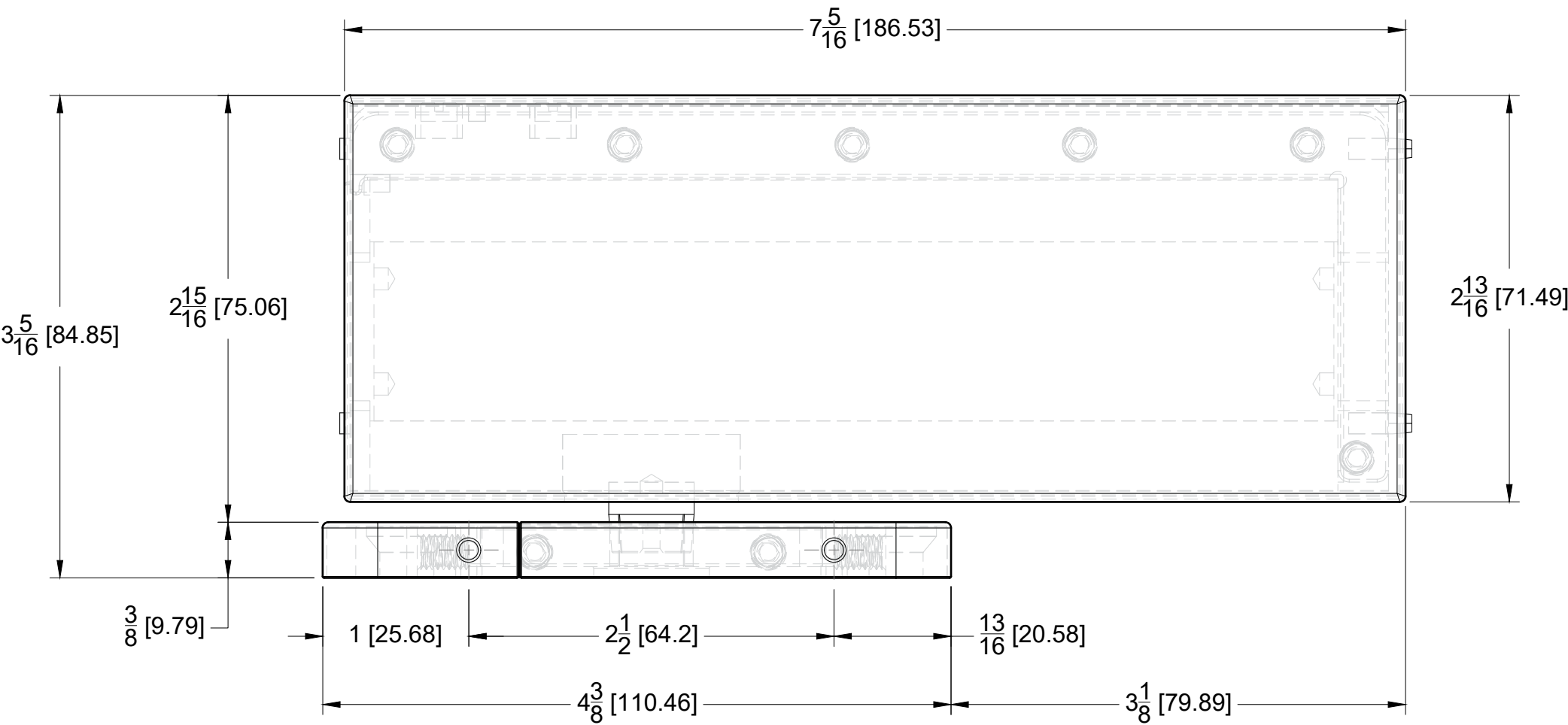
TOP VIEW



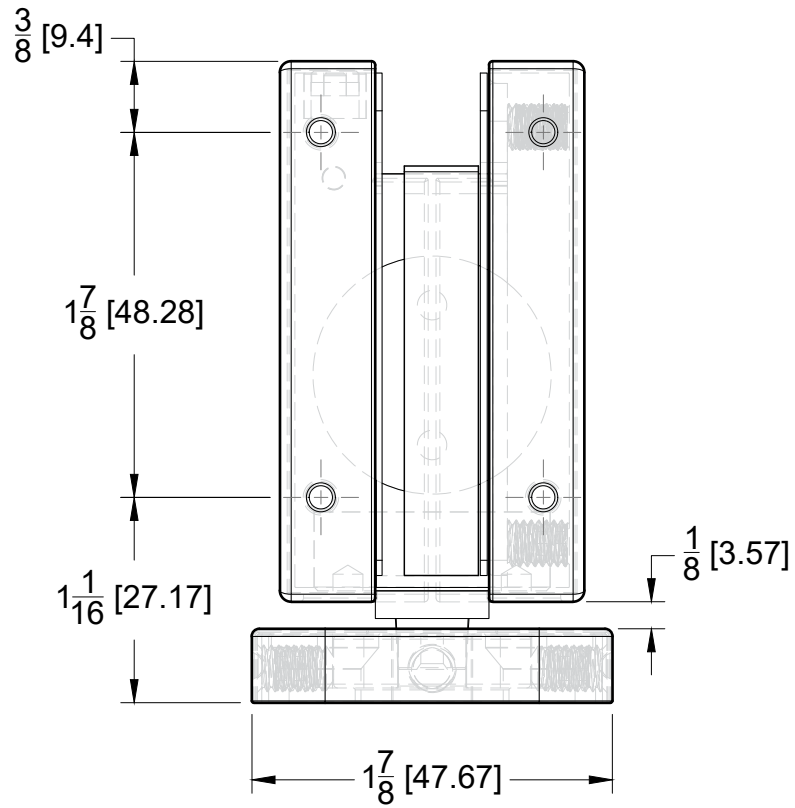
LEFT SIDE VIEW



FRONT VIEW



RIGHT SIDE VIEW



10101 NW 79th Ave
Hialeah Gardens, FL 33016
Phone: (877) 658-9008

Product: Hydraulic Patch Fitting Kit (Hold Open)	
Code: OCFH-KIT	Material: 304 Stainless Steel

Specifications:
Glass thickness: 3/8" (10 mm) to 1/2" (12 mm).
Cutout required
Includes: Gaskets, Allen key and mounting screws

BEFORE PROCEEDING WITH FABRICATION, PLEASE ENSURE THAT YOU VERIFY ALL MEASUREMENTS. IT IS CRUCIAL TO DOUBLE-CHECK THE SPECIFICATIONS TO AVOID ANY DISCREPANCIES. FOR THE MOST UP-TO-DATE TECHNICAL SPECSHEETS AND CUTOUTS, KINDLY VISIT GLASSHARDWARE.COM.
Date: 07/08/25
Sheet N°: 4/4