

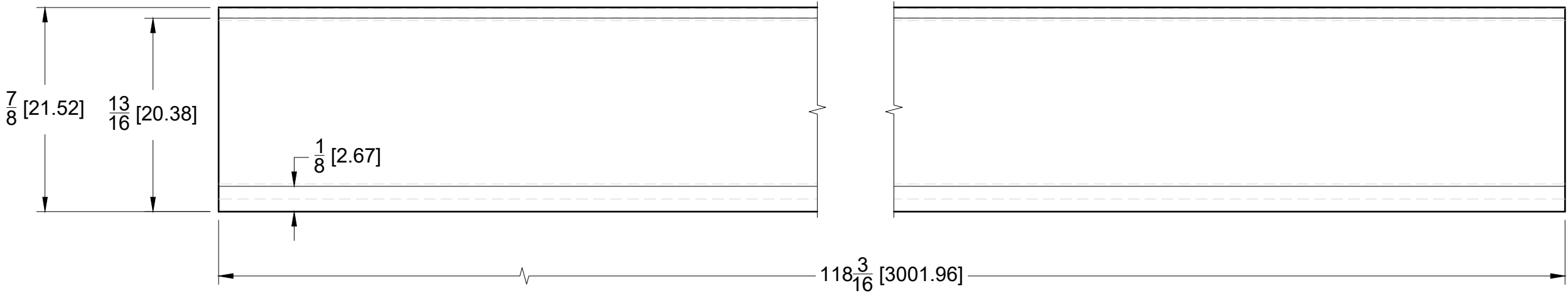
10101 NW 79th Ave  
Hialeah Gardens, FL 33016  
Phone: (877) 658-9008

Product:	<b>118" Fixed Panel Adapter for Aventura System</b>	
Code:	AVSGD09D	Material: Aluminum

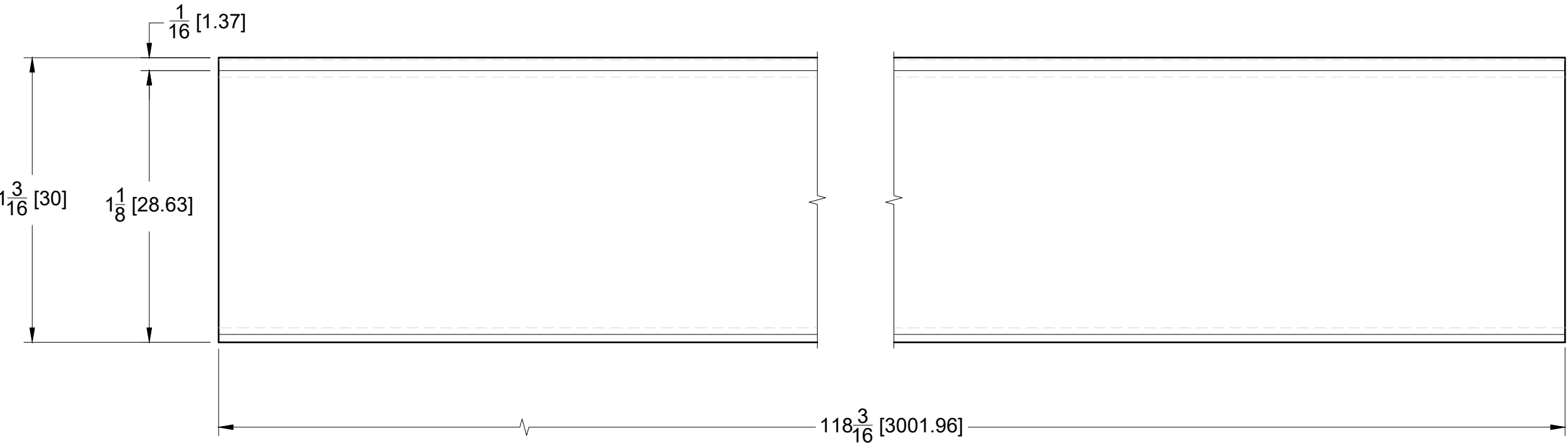
Specifications:
Glass thickness: 3/8" (10 mm) to 1/2" (12 mm).

BEFORE PROCEEDING WITH FABRICATION, PLEASE ENSURE THAT YOU VERIFY ALL MEASUREMENTS. IT IS CRUCIAL TO DOUBLE-CHECK THE SPECIFICATIONS TO AVOID ANY DISCREPANCIES. FOR THE MOST UP-TO-DATE TECHNICAL SPECSHEETS AND CUTOUTS, KINDLY VISIT <a href="http://GLASSHARDWARE.COM">GLASSHARDWARE.COM</a> .	
Date: 09/26/25	Sheet N°: 1/2

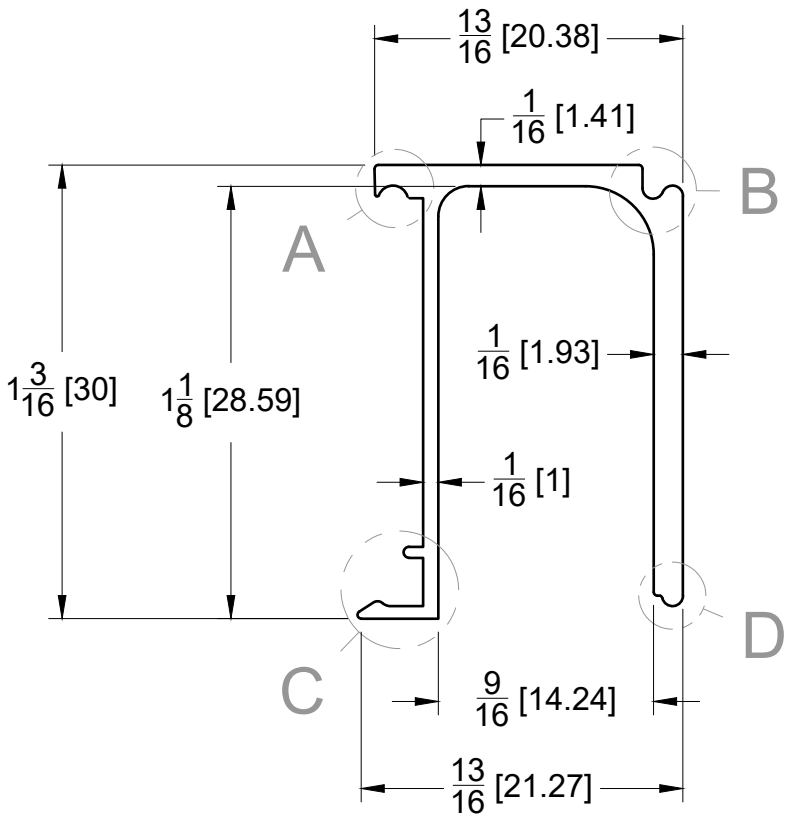
TOP VIEW



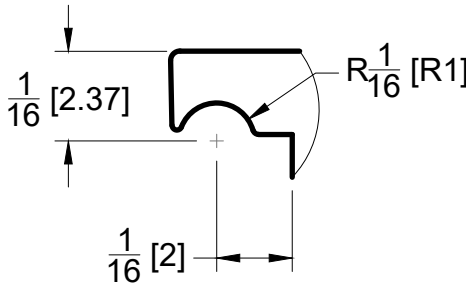
FRONT VIEW



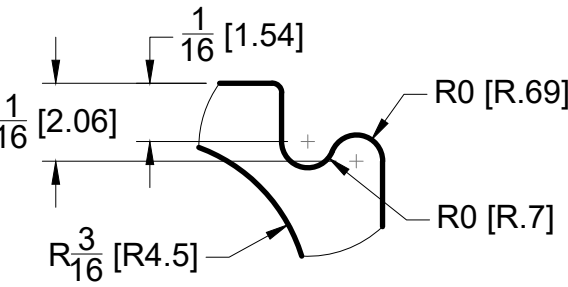
SIDE VIEW



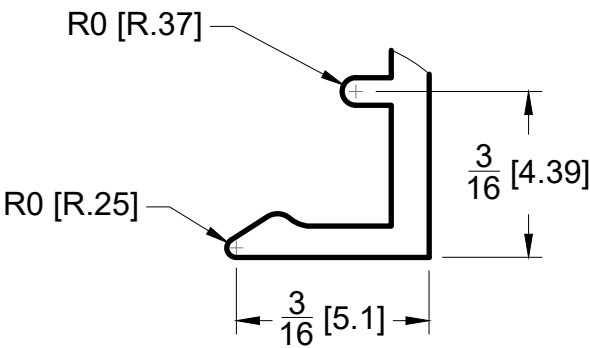
DETAIL A



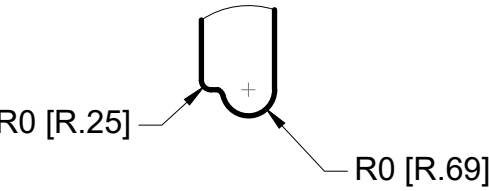
DETAIL B



DETAIL C



DETAIL D



10101 NW 79th Ave  
Hialeah Gardens, FL 33016  
Phone: (877) 658-9008

Product: **118" Fixed Panel Adapter for Aventura System**

Code: AVSGD09D

Material: Aluminum

Specifications:  
Glass thickness: 3/8" (10 mm) to 1/2" (12 mm)

BEFORE PROCEEDING WITH FABRICATION, PLEASE ENSURE THAT YOU VERIFY ALL MEASUREMENTS. IT IS CRUCIAL TO DOUBLE-CHECK THE SPECIFICATIONS TO AVOID ANY DISCREPANCIES. FOR THE MOST UP-TO-DATE TECHNICAL SPECSHEETS AND CUTOUTS, KINDLY VISIT [GLASSHARDWARE.COM](http://GLASSHARDWARE.COM).

Date: 09/26/25

Sheet N°: 2/2